

# PRECISION PORTABLE HYGROMETER / DATALOGGER

Model : HTD 200



## INTRODUCTION

HTD 200 is a Precision handheld relative humidity, Temperature and dew point or frost point Temperature Indicator with data logging facilities to record the live data and optional system interface software is provided to analysis the recorded data in graphical and record format. The HTD 200 is suitable for Reference standard in Calibration laboratories, HVAC applications, manufacturing or storage areas in all Industries with in the Temperature & Humidity range of -40 to 85°C / 0 to 100% RH.

## APPLICATIONS

- Calibration & Testing Laboratories
- Pharmaceutical Industry
- Food Industry
- Agriculture Industry
- Server rooms
- Hospitals, etc.,.

## FEATURES

- ✓ 2.8" TFT display with Touch screen
- ✓ Wide Temperature & Humidity range
- ✓ Better Accuracy  $\pm 0.2^{\circ}\text{C}$  /  $\pm 0.8\%$  RH
- ✓ Resolution  $0.01^{\circ}\text{C}$  /  $0.01\%$  RH
- ✓ Inbuilt data logging with huge memory space
- ✓ Wide temperature range of probes are available on request
- ✓ Portable & Rugged with carrying case
- ✓ Psychometric converted indication of Dew point, Wet bulb temperature, Vapor partial pressure etc.,.
- ✓ Built in rechargeable polymer Li-ion battery with charger
- ✓ ISO/IEC 17025 Accredited Calibration certificate
- ✓ Optional PC Interface software for Data analysis.

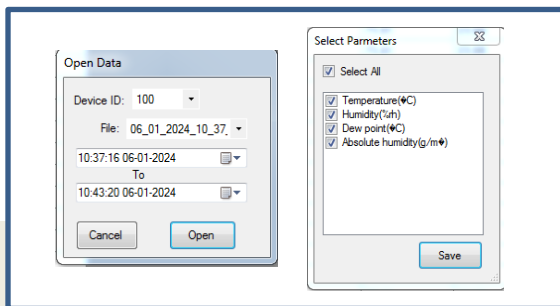
## Technical Specifications

Model	HTD 200
Display	2.8" True colour TFT display with touch screen
Range	Temperature: -40 to 85 °C Humidity: 0 to 100% RH
Resolution	0.01 °C / 0.01 % RH
Accuracy	$\pm 0.2^{\circ}\text{C}$ / $\pm 0.8\%$ RH*
Psychometric calculated indication	Dew / Frost point ( Dp / Fp ) Wet Bulb Temperature ( Tw ) Vapour partial pressure ( E ) Vapour Saturation pressure ( Ew ) Mixing ratio by weight (dry) ( g / kg ) Enthalpy ( H ) ( KJ / kg ) Specific Humidity (moisture) ( g / kg ) Absolute Humidity (moisture) ( g / m <sup>3</sup> ) Volume mixing ratio (dry) ( ppm )
Calculation method	WMO method
Display refresh rate	1 s (typical)
Calibration	5 point lookup table for both Temperature & Humidity
Alarm	Audible & Visible user settable individual High & Low alarm set with alarm mode selection for all the 3 parameters
Touch sound	On / Off option available
Logging interval	1 sec to 24 Hrs programmable
Memory capacity	4 to 32 GB Internal storage

Data download	Via USB
Battery charging port	USB C type
Integrated battery	3.7V / 10,000 mAh Inbuilt rechargeable polymer Li-ion battery
Backlight time interval	0(OFF) to 59 mins : 59 secs (user adjustable)
Brightness adjustment	10 to 100% (user adjustable)
Application environment range	-10 to 60 °C / 0 to 100% RH (non condensed)
Storage environment range	-10 to 45 °C / 10 to 90% RH
Housing material	ABS with anti-slip grip silicon cover
Protection class	IP40
Overall Dimension in mm	35 x 80 x 165 mm ( L x B x H)
Instrument Weight	560 g (Approx.)

**Note:** Due to continuous product improvements, Published specifications may change with out notice  
**\*Refer Rotronics Probe model number: XD33A – S3X**

## Sansel Soft 01 (version 1.0)



**Sansel Soft 01 is the ultimate Data analyze software to import data from HTD 200 series. Effortlessly Ultra fastest download of HTD 200 series stored data into visually compelling graphs with this user-friendly software. Customize and enhance your visualizations, apply filters, and print directly from the tool. Perfect for Laboratories, research institutes, Hospitals, food industries...etc., Sansel Soft 01 is your go-to solution for powerful and easy data visualization. Where data meets design, Sansel Soft 01 delivers insights at your fingertips.**

## Features

- ✓ Ultra fastest download data's in fraction of seconds from HTD 200 series to PC local database & analyze.
- ✓ Data Report & Graph view with user selectable parameters for both USB connected HTD series instrument's storage data and old Database stored data's in local PC.
- ✓ Report export in CSV & PDF format.
- ✓ Graph export in PNG & PDF format.
- ✓ Easy customized filter option available based on both Report & Graph view by Date & time for selected parameters.
- ✓ User selectable report Title, subtitle & logo for both Report & Graph.
- ✓ User selectable graph Title, X-label, Y-label, maker scale, Auto scale.
- ✓ Multiple HTD 200 series possible to connect and download data one by one in single software.
- ✓ Software license key protection available to protect your software to misuse by unauthorized user in different PC.

## Standard Delivery

1. Basic Instrument with sensor 2m cable
2. Charger with cable
3. Instruction manual
4. Traceable calibration certificate

## Optional

1. Carrying case
2. ISO/IEC 17025 Accredited Calibration certificate
3. PC Interface software



## SANSEL INSTRUMENTS AND CONTROLS SANSEL CALIBRATION LABORATORIES

ISO/IEC 17025 Accredited Calibration Laboratory by NABL CC - 2879  
(Thermal, Mechanical, Electro-Technical, Dimension Parameters)

1 / 46 , 3<sup>rd</sup> Main road, Ganga Nagar, MMDA Colony , Maduravoyal , Chennai - 600 095. INDIA  
☎ +91 44 2378 3951, 📞 +91 72999 72085 / 86 / 93, 📠 +91 98401 49928 ✉ enquiry@ sansel.net

🌐 [www.sansel.net](http://www.sansel.net)

🌐 [www.sansel.in](http://www.sansel.in)

🌐 [www.sansel.co.in](http://www.sansel.co.in)

🌐 [www.calibrators.in](http://www.calibrators.in)

